

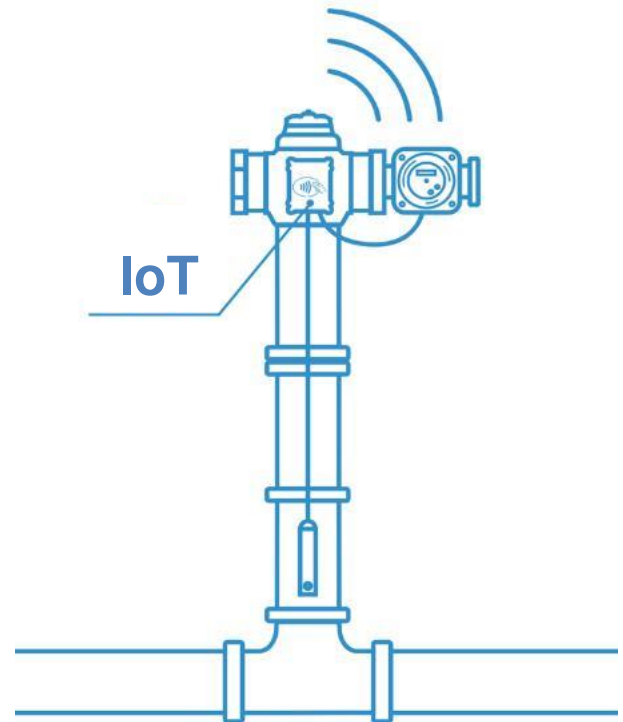
## Hawle IoT Smart Hydrant Master

The Hawle IoT Smart Hydrant Master looks exactly like the well-known conventional Hawle H8 hydrant, but it is capable of taking measurements that are useful and important for water network operators. Its main advantage is that the fire hydrant is connected to the piping network, but is located above the ground, so that it can be well integrated into the IoT communication system and at the same time performs its original function. The device measures the authorized and unauthorized use of the hydrant, thus the time and duration of loading and unloading can be calculated, which are all essential information for the operators. These data show relationships between parameters that were not available to measure in the past, as no device was available that could run on battery power for years.

### THE WS IOT SHM CAN BE INSTALLED

- easy installation as a replacement of existing hydrant
- at pipe reconstructions as new hydrant installations
- where pressure measurement is not important but hydrant usage have to be controlled
- where illegal water discharge may occur

## Smart hydrant



### COMMUNICATION

|                        |                                   |
|------------------------|-----------------------------------|
| Transmission options   | Nb-IoT/LoRaWAN                    |
| Antenna                | Internal, in the housing          |
| Transmission frequency | Down to 5 minutes, typical 1 hour |
| SIM type               | eSIM                              |
| NFC communication      | 13.56Mhz                          |

### SENSORS

|                  |  |
|------------------|--|
| Water sensor     | Dual water level sensors for sensing hydrant state (bottom, top) |
| Pressure sensors | 1  |
| Pressure range   | 0-20bar  |
| Accuracy         | ±1%  |
| Protection       | IP69K  |

### BATTERY

|                   |   |
|-------------------|---|
| Internal battery  | 3,6V  |
| Battery chemistry | Lithium Thionyl Chloride (non rechargeable) |

### ENVIRONMENTAL

|                       |  |
|-----------------------|--|
| Operating temperature | -20 - 85 °C                              |
| Ingress protection    | IP67 at the top<br>IP 69K on the sensors |

### PHYSICAL

|            |                |
|------------|----------------|
| Dimensions | 82x80x55       |
| Weight     | 600g           |
| Connection | DN80/DN100     |
| Length     | 1000/1250/1500 |